

CABLE 379 RF: I-PEX MHF TO RP SMA S/T BULKHEAD JACK WITH O-RING RATED TO IP67/68 TO MULTIPLE CABLE SIZES, 6GHz

SPECIFICATIONS:

1. I-PEX MHF PLUG, P/N:

FOR Ø1.13MM CABLE: 20278-112R-13.

FOR RG178 CABLE: 20278-112R-18.

2. COAXIAL CABLE, SEE P/N OPTIONS.

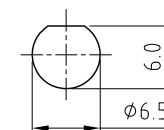
3. SMA STRAIGHT BULKHEAD JACK WITH O-RING RATED TO IP67/68, P/N: RFCT-SMA071-F78.

USAGE PRECAUTIONS: CABLES USING 'MICRO' COAX ARE DELICATE:

(i) HANDLE WITH CARE.

(ii) DO NOT TWIST; APPLY EXCESSIVE FORCES OR SHARP BENDS TO THE CABLE. DO NOT FORCEFULLY DEFORM WIRES.

(iii) CONSULT CONNECTOR MANUFACTURER'S DATASHEETS FOR DETAILED NOTES ON HANDLING INSTRUCTIONS.

RECOMMENDED SMA
MOUNTING HOLE

ENVIRONMENTAL:

A. BULKHEAD MOUNTED CONNECTOR (RFCT-SMA071-F78) RATED TO THE FOLLOWING SPECIFICATION:

i. IP6X - DUST TIGHT - NO PARTICLE INGRESS.

ii. IPX7 WATERPROOF FOR 30 MINUTES UP TO 1 METER UNDERWATER.

iii. IPX8 WATERPROOF FOR 48 HOURS AT 1 METER UNDERWATER.

NOTES:

1. THE ORIENTATION OF CONNECTORS ON DRAWING IS FOR REFERENCE ONLY, IF THE ORDER IS LEFT BLANK THE CONNECTOR WILL NOT HAVE FIXED ORIENTATION.

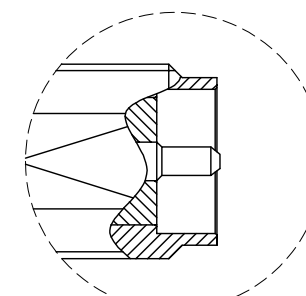
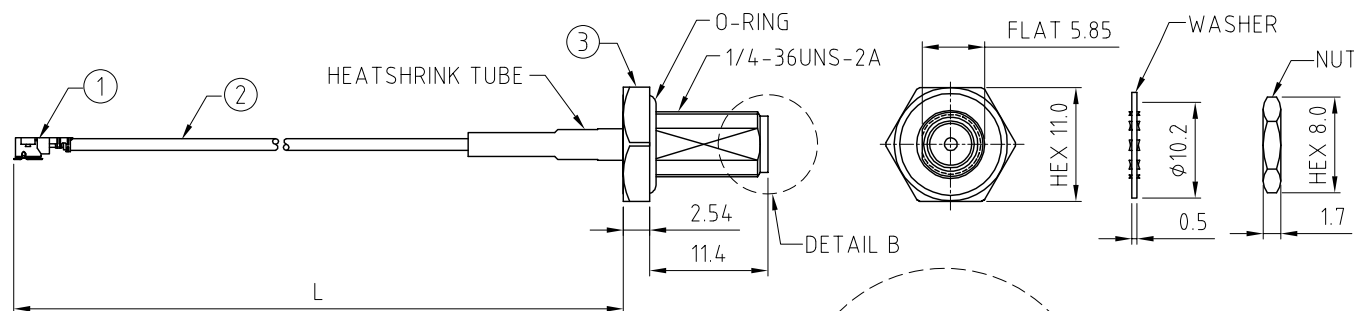
2. FIXED ORIENTATION IS SUGGESTED FOR CABLE LENGTH 50MM TO 100MM. PLEASE SPECIFY THE FIXED ORIENTATIONS FROM THE ORDER CODE (F1, F2, ETC)

3. CONTACT GCT IF THE ORIENTATION YOU REQUIRE IS NOT SHOWN.

4. WORKING FREQUENCY RANGE: DC-6GHz.

5. OPERATING TEMPERATURE: -40°C~+85°C.

6. IMPEDANCE: 50 Ohm.

DETAIL B
SCALE 3:1

HOW TO ORDER

CABLE 379 RF - X X X - X X - X - X

"L" LENGTH IN MM:

eg: 100MM = 100

(MIN. 050-MAX.400

STANDARD = 100, 150, 200)

Tolerance: 50-200mm: ±5mm.

201-400mm: ±7mm.

CABLE SIZE OPTIONS:

1 = Ø1.13MM CABLE, COLOR: GREY

2 = Ø1.13MM LOW LOSS CABLE, COLOR: GREY

3 = RG178 CABLE, COLOR: BROWN

WASHER AND NUT OPTIONS:

BLANK = SEPARATELY PACKED (STANDARD)

A = ASSEMBLED WITH CONNECTOR

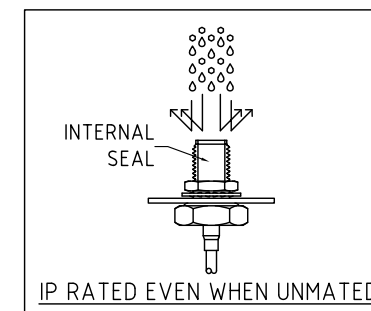
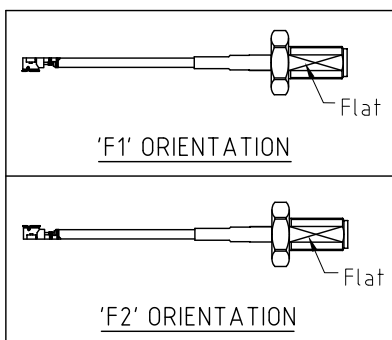
ORIENTATION OPTIONS:

BLANK = DOES NOT HAVE A FIXED ORIENTATION

F1 = MHF CONNECTION DOWN (L=50-200MM)

F2 = MHF CONNECTION UP (L=50-200MM)

(SEE NOTES 1, 2, 3 AND DIAGRAMS FOR MORE INFORMATION)



| | |
|-------------------|--------------------------|
| REV. DATE & DRN | 10 19/02/20 - CC RELEASE |
| 11 20/04/20 - NYW | |
| 12 15/06/20 - NYW | |
| 13 14/07/20 - NYW | |
| 14 29/07/22 - NYW | |
| 15 24/03/24 - CC | |
| 16 22/02/25 - CC | |
| ADD GCT logo | |

| | | | |
|-------------------|----------------------|---|---|
| Scale: NTS | THIRD ANGLE | Unstated .X .XX .XXX ANGLES | Tolerances: N/A N/A N/A N/A |
| Drawn: CC | | | |
| App'd: XXX | Title CABLE ASSEMBLY | | |
| Date: 22 Feb. '25 | Revision: 1.6 | Unit: mm | |

IP Rated
RF Products

www.gct.co

www.gradconn.com

Type: Cable 379 RF

CABLE 379 RF

Drawing Number:

Sheet 1 of 1

Drawing © E and O E

© THIS DRAWING IS CONFIDENTIAL AND MUST NOT BE COPIED OR DISCLOSED WITHOUT WRITTEN CONSENT